

RCL03 Mini receiver 12- 24 V AC / 12-32 V DC 2-channel



The RCL03 mini receiver is used above all to upgrade existing systems.

Its two potential free relay contacts make it possible to upgrade a wide variety of systems with a radio interface. Converting a garage door motor is just as easy as integrating Easywave transmitters in complex home call systems.

The RCL03 is powered by 12-24 V AC / 12-32 V DC and can be programmed with up to 32 transmission codes.



RCL03E5002B01

Technical specifications

Coding	Easywave Up to 32 transmitters can be programmed.
Frequency	868.30 MHz
Channels	2
Power supply	12-24 V AC / 12-32 V DC
Power consumption	0.4 W standby at 24 V DC 0.8 W standby at 24 V AC
Operating modes	DEAD MAN ON/OFF (2-button operation) PULSE (1 second) ROLLER BLIND MOTOR CONTROL (2-button operation) ROLLER BLIND MOTOR CONTROL (3-button operation)
Inputs	2 external buttons
Outputs	2 potential-free relay contacts (changeover)
Maximum contact load	
- AC	120 V / 1 A / 62 VA
- DC	50 V / 1 A / 30 W
Operating temperature	-20 °C to +60 °C
Dimensions (W/L/H)	70/64/35 mm
Color	white similar RAL 9003

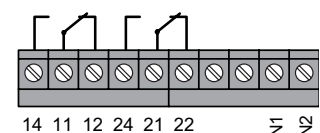
Scope of delivery

- Mini receiver
- Adhesive pad
- Operating manual

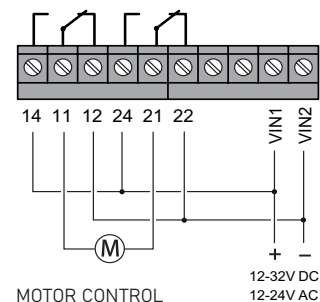
Models

Product number	Description
RCL03E5002B01	Mini receiver, Easywave, 12-24 V AC / 12-32 V DC, 2x changeover, potential-free, white

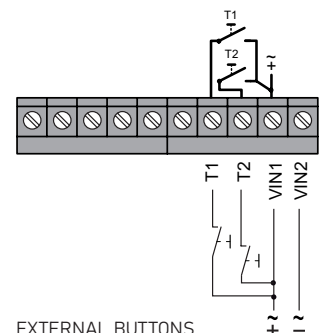
Wiring diagram



DEAD MAN, ON/OFF,
PULSE



MOTOR CONTROL



EXTERNAL BUTTONS